

ALORIS SUPER PRECISION QUICK CHANGE TOOL POSTS

FOR MANUAL AND CNC LATHES

GUARANTEED LASTING REPETITIVE ACCURACY TO WITHIN MILLIONTHS

FEATURES:

- ONLY A SECOND TO CHANGE TOOLS
- RUGGED — NO CHATTER OR VIBRATION
- NO TIME WASTED WITH SHIMS
- UNLIMITED VERSATILITY
- SAFE AND SIMPLE TO OPERATE
- SPEED YOUR LATHE OPERATIONS UP TO 90%
- GUARANTEED*

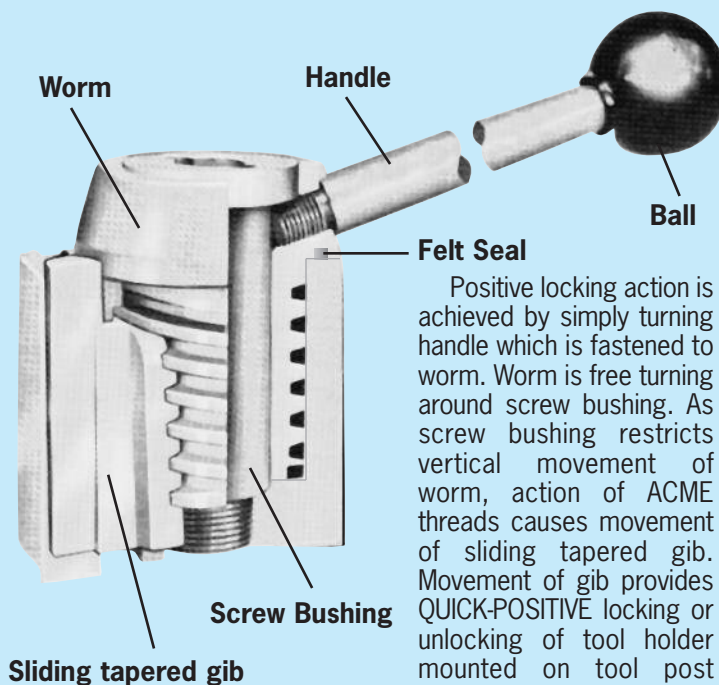


Aloris super precision tool post Patented locking device assembly

The ALORIS Super Precision tool post provides built-in quick tool changing versatility and flexibility combined with wide range, positive control and repetitive accuracy to meet the most exacting working tolerances. Whether for tool room or production work, the Aloris line of tool posts and holders will save set-up time and increase production on all types of lathe operations from fine precision work to heavy duty cutting without chatter or vibration.

Comparison with other tools will highlight Aloris superiority: the quick change tool holder eliminates time consuming set-up — no tool post indexing necessary, no indexing balls, no need for shims, no need to disturb the basic set-up.

This new catalog includes the newest developments produced by Aloris design engineers in their constant search for new and better products that will increase productivity and reduce operating costs of all machine tool operations.



Positive locking action is achieved by simply turning handle which is fastened to worm. Worm is free turning around screw bushing. As screw bushing restricts vertical movement of worm, action of ACME threads causes movement of sliding tapered gib. Movement of gib provides QUICK-POSITIVE locking or unlocking of tool holder mounted on tool post dovetail.

*This guarantee does not include repair or replacement due to misuse, abuse, accidental damage or normal wear.

ALORIS QUICK CHANGE TOOL POSTS

Aloris Miniature (MA) Tool Post

Also on Page 26



Super precision single dovetail tool post designed for jewelers and miniature lathes. Three holders can hold six tools for various operations. Height adjustment is provided for each tool.

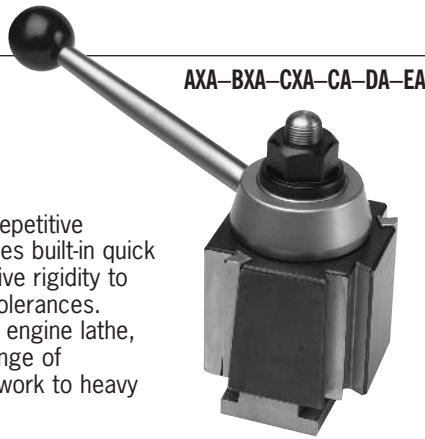
Tool holder capacity: $\frac{1}{8}$ " - $\frac{3}{8}$ ".

Tool post dimensions: $1\frac{1}{2}$ " x $1\frac{1}{2}$ " x $1\frac{1}{4}$ ".
See page 26 for toolholders.

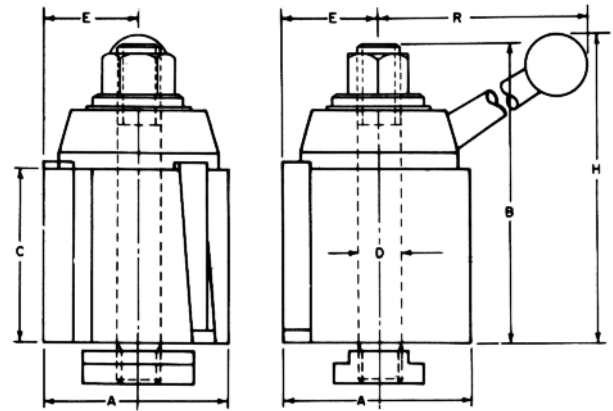
ORDER #: MA

Aloris Super-Precision Tool Post

Precision engineered to assure repetitive accuracy. Advanced design provides built-in quick tool changing versatility with positive rigidity to meet the most exacting working tolerances. Quickly and easily installed on any engine lathe, bench or CNC lathe, for a wide range of operations — from fine precision work to heavy duty cutting.

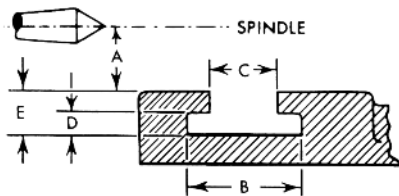


AXA-BXA-CXA-CA-DA-EA



ORDERING INFORMATION

AXA SERIES										BXA SERIES										CXA SERIES										CA SERIES										DA SERIES										EA SERIES									
ORDER #: AXA										ORDER #: BXA										ORDER #: CXA										ORDER #: CA										ORDER #: DA										ORDER #: EA									
DIMENSIONS										DIMENSIONS										DIMENSIONS										DIMENSIONS										DIMENSIONS										DIMENSIONS									
A	B	C	D	E	H	R	SWING UP TO	A	B	C	D	E	H	R	SWING UP TO	A	B	C	D	E	H	R	SWING UP TO	A	B	C	D	E	H	R	SWING UP TO	A	B	C	D	E	H	R	SWING UP TO	A	B	C	D	E	H	R	SWING UP TO												
2½	3¾	2¼	¾	1¾	4¼	5¾	10"	3	4¾	2¾	¾	1¾	5¾	7¾	12-15"	3½	5¾	3	¾	1¾	6¾	7¾	13-18"	4	6¼	3¾	¾	2¾	7	9	14-20"	5	7¾	4¾	1"	2¼	8¾	10¾	17-48"	6	8½	5	1¼	3¾	10	13¾													



MAKE OF LATHE	SWING	A	B	C	D	E

*To order tool holders see page 4 thru 25. *To order sets see pages 26 and 27.

*All Aloris Super Precision Quick Change Tool Posts are furnished with a BLANK T-Nut. Aloris can **machine the T-Nut** at **NO ADDITIONAL CHARGE** if "dimensions" are provided **at time of purchase**, otherwise the **T-Nut will ship blank**.

Please fill out chart and fax to 973-772-8606. (Please reference your Purchase Order on your T-Nut ordering sheet.)

POSTS: REPLACEMENT PARTS

Not Interchangeable with Indexable Tool Post Parts.


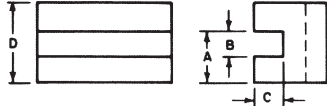

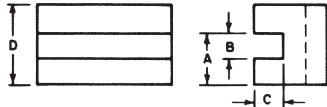

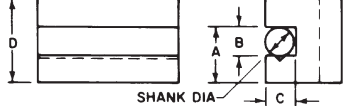

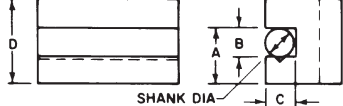

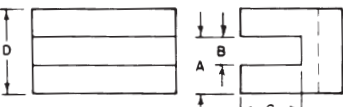

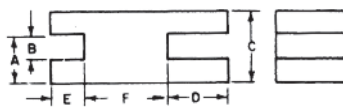

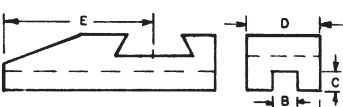

"T" BOLTS						
ORDER #	AXA-TB*	BXA-TB*	CXA-TB*	CA-TB*	DA-TB*	EA-TB*

BALLS						
ORDER #	AXA-BALL*	BXA-BALL*	CXA-BALL*	CA-BALL*	DA-BALL*	EA-BALL*

HANDLES						
ORDER #	AXA-HDL*	BXA-HDL*	CXA-HDL*	CA-HDL*	DA-HDL*	EA-HDL*

FLANGE NUTS						
ORDER #	AXA-FN*	BXA-FN*	CXA-FN*	CA-FN*	DA-FN*	EA-FN*

QUICK CHANGE SHANK TOOL HOLDERS

				AXA SERIES						
#1		TURNING AND FACING HOLDER Takes various sizes of bits. Turning and facing tools can be locked in together. Saves time and labor when changing operations.		ORDER # AXA-1						
				A	B	C	D	Tool Bit		
				$1\frac{5}{16}$	$\frac{1}{2}$	$\frac{7}{16}$	$1\frac{1}{2}$	$\frac{3}{16}-\frac{1}{2}$		
#1S		OVERSIZE TURNING AND FACING HOLDER Takes large sizes of bits. Turning and facing tools can be locked in together. Saves time and labor when changing operations. B dimension is oversize which allows larger tools to be used.		ORDER # AXA-1S						
				A	B	C	D	Tool Bit		
				1"	$\frac{5}{8}$	$\frac{7}{16}$	$1\frac{1}{2}$	$\frac{5}{8}$ max		
#2		BORING, TURNING AND FACING HOLDER "V" groove holds round shank boring bars and tools as well as square tool bits.		ORDER # AXA-2						
				A	B	C	D	Tool Bit	Shank	
				$1\frac{5}{16}$	$\frac{1}{2}$	$\frac{7}{16}$	$1\frac{1}{2}$	$\frac{3}{16}-\frac{1}{2}$	$\frac{7}{16}$	
#2S		OVERSIZE BORING, TURNING AND FACING HOLDER "V" groove holds round shank boring bars and tools as well as square tool bits. B dimension is oversize which allows larger tools to be used.		ORDER # AXA-2S						
				A	B	C	D	Tool Bit	Shank	
				1"	$\frac{5}{8}$	$\frac{7}{16}$	$1\frac{1}{2}$	$\frac{5}{8}$ max	$\frac{1}{2}$	
#6		MULTIPLE TOOL HOLDER Versatile, ideal for repetitive work: for gang set-ups or form tool.		ORDER # AXA-6						
				A	B	C	D	Tool Bit		
				1"	$\frac{1}{2}$	$1\frac{1}{8}$	$1\frac{9}{16}$	$\frac{1}{4}-\frac{1}{2}$		
#9		MULTI-PURPOSE HOLDER Ideal for multiple operations. Left or right turning and facing, working close to tail stock, form tool gang set-ups, etc. Extremely useful for short heavy duty boring or CNC gang tooling.		ORDER # AXA-9 SPECIAL ORDER						
				A	B	C	D	E	F	Tool Bit
				$1\frac{5}{16}$	$\frac{3}{8}$	$1\frac{1}{2}$	$1\frac{7}{8}$	1"	$2\frac{1}{8}$	$\frac{3}{16}-\frac{3}{8}$
#13 #13L		EXTENSION TOOL HOLDER #13 & 13L A new addition to the versatile Aloris dovetail mounted quick-change tool holder series. The #13 provides an extremely rugged extended open slot featuring maximum rigidity for deep turning or facing operation. 13L – opposite hand.		ORDER # AXA-13		ORDER # AXA-13L				
				A	B	C	D	E	Tool Bit	
				$1\frac{5}{16}$	$\frac{1}{2}$	$\frac{7}{16}$	$1\frac{1}{2}$	$2\frac{1}{2}$	$\frac{3}{16}-\frac{1}{2}$	
HEIGHT ADJUSTMENT ASSEMBLY					ORDER # AXA-HA*					
TOOL HOLDER SET SCREWS (SET OF 4)			ORDER # AXA-SS*							



BXA SERIES						CXA SERIES						CA SERIES						DA SERIES						EA SERIES											
ORDER # BXA-1						ORDER # CXA-1						ORDER # CA-1						ORDER # DA-1						ORDER # EA-1											
A	B	C	D	Tool Bit		A	B	C	D	Tool Bit		A	B	C	D	Tool Bit		A	B	C	D	Tool Bit		A	B	C	D	Tool Bit							
1 ¹ / ₈	⁵ / ₈	¹ / ₂	1 ³ / ₄	1/4– ⁵ / ₈		1 ⁷ / ₁₆	³ / ₄	⁵ / ₈	2 ¹ / ₈	1/2– ³ / ₄		1 ¹¹ / ₁₆	1"	³ / ₄	2 ¹ / ₂	1/2–1"		2 ³ / ₁₆	1 ¹ / ₄	1"	3 ¹ / ₈	1/2–1 ¹ / ₄		2 ¹¹ / ₁₆	1 ¹ / ₂	1 ¹ / ₄	4"	3/4–1 ¹ / ₂							
ORDER # BXA-1S						ORDER # CXA-1S						ORDER # CA-1S						ORDER # DA-1S																	
A	B	C	D	Tool Bit		A	B	C	D	Tool Bit		A	B	C	D	Tool Bit		A	B	C	D	Tool Bit													
1 ³ / ₁₆	³ / ₄	¹ / ₂	1 ³ / ₄	3/4 max		1 ⁹ / ₁₆	1"	⁵ / ₈	2 ¹ / ₈	1" max		2"	1 ¹ / ₄	³ / ₄	2 ¹ / ₂	1 ¹ / ₄ max		2 ⁵ / ₁₆	1 ¹ / ₂	1"	3 ¹ / ₈	1 ¹ / ₂ max													
ORDER # BXA-2						ORDER # CXA-2						ORDER # CA-2						ORDER # DA-2						ORDER # EA-2											
A	B	C	D	Tool Bit	Shank	A	B	C	D	Tool Bit	Shank	A	B	C	D	Tool Bit	Shank	A	B	C	D	Tool Bit	Shank	A	B	C	D	Tool Bit	Shank	A	B	C	D	Tool Bit	Shank
1 ¹ / ₈	⁵ / ₈	¹ / ₂	1 ³ / ₄	1/4– ⁵ / ₈	¹ / ₂	1 ⁷ / ₁₆	³ / ₄	⁵ / ₈	2 ¹ / ₈	1/2– ³ / ₄	³ / ₄	1 ¹¹ / ₁₆	1"	³ / ₄	2 ¹ / ₂	1/2–1"	¹³ / ₁₆	2 ³ / ₁₆	1 ¹ / ₄	1"	3 ¹ / ₈	1/2–1 ¹ / ₄	1"	2 ¹¹ / ₁₆	1 ¹ / ₂	1 ¹ / ₄	4"	3/4–1 ¹ / ₂	1 ¹ / ₄						
ORDER # BXA-2S						ORDER # CXA-2S						ORDER # CA-2S						ORDER # DA-2S																	
A	B	C	D	Tool Bit	Shank	A	B	C	D	Tool Bit	Shank	A	B	C	D	Tool Bit	Shank	A	B	C	D	Tool Bit	Shank												
1 ³ / ₁₆	³ / ₄	¹ / ₂	1 ³ / ₄	3/4 max	⁵ / ₈	1 ⁹ / ₁₆	1"	⁵ / ₈	2 ¹ / ₈	1" max	³ / ₄	2"	1 ¹ / ₄	³ / ₄	2 ¹ / ₂	1 ¹ / ₄ max	1"	2 ⁷ / ₁₆	1 ¹ / ₂	1"	3 ¹ / ₈	1 ¹ / ₂ max	1 ¹ / ₄												
ORDER # BXA-6						ORDER # CXA-6						ORDER # CA-6						ORDER # DA-6						ORDER # EA-6											
A	B	C	D	Tool Bit		A	B	C	D	Tool Bit		A	B	C	D	Tool Bit		A	B	C	D	Tool Bit		A	B	C	D	Tool Bit							
1 ¹ / ₁₆	¹ / ₂	1 ⁹ / ₁₆	1 ³ / ₄	1/4– ¹ / ₂		1 ⁵ / ₁₆	⁵ / ₈	1 ⁷ / ₁₆	2 ¹ / ₈	3/8– ⁵ / ₈		1 ⁹ / ₁₆	³ / ₄	1 ⁷ / ₈	2 ¹ / ₂	1/2– ³ / ₄		2 ¹ / ₈	1"	2 ¹ / ₈	3 ¹ / ₄	1/2–1"		2 ⁵ / ₈	1 ¹ / ₄	2 ⁵ / ₈	4"	3/4–1 ¹ / ₂							
ORDER # BXA-9 SPECIAL ORDER						ORDER # CXA-9 SPECIAL ORDER						ORDER # CA-9 SPECIAL ORDER						ORDER # DA-9 SPECIAL ORDER																	
A	B	C	D	E	F	Tool Bit	A	B	C	D	E	F	Tool Bit	A	B	C	D	E	F	Tool Bit	A	B	C	D	E	F	Tool Bit								
1 ¹ / ₈	¹ / ₂	1 ³ / ₄	2 ¹ / ₁₆	1 ³ / ₁₆	2 ⁵ / ₈	1/4– ¹ / ₂	1 ⁵ / ₁₆	⁵ / ₈	2"	3"	1 ⁵ / ₈	3 ³ / ₈	3/8– ⁵ / ₈	1 ¹ / ₂	³ / ₄	2 ¹ / ₂	3 ³ / ₈	1 ³ / ₄	3 ⁷ / ₈	3/8– ³ / ₄	2"	1"	3"	4"	2 ¹ / ₈	4 ⁷ / ₈	1/2–1"								
ORDER # BXA-13			ORDER # BXA-13L			ORDER # CXA-13			ORDER # CXA-13L			ORDER # CA-13			ORDER # CA-13L			ORDER # DA-13			ORDER # DA-13L			ORDER # EA-13			ORDER # EA-13L								
A	B	C	D	E	Tool Bit		A	B	C	D	E	Tool Bit		A	B	C	D	E	Tool Bit		A	B	C	D	E	Tool Bit		A	B	C	D	E	Tool Bit		
1 ¹ / ₈	⁵ / ₈	¹ / ₂	1 ³ / ₄	2 ¹ / ₄	1/4– ⁵ / ₈		1 ⁷ / ₁₆	³ / ₄	⁵ / ₈	2 ¹ / ₈	3 ³ / ₈	1/2– ³ / ₄		1 ¹¹ / ₁₆	1"	³ / ₄	2 ¹ / ₂	3 ³ / ₄	1/2–1"		2 ¹ / ₈	1 ¹ / ₄	1"	3 ¹ / ₈	5"	1/2–1 ¹ / ₄		2 ¹¹ / ₁₆	1 ¹ / ₂	1 ¹ / ₄	4"	6 ¹ / ₂	3/4–1 ¹ / ₂		
ORDER # BXA-HA*						ORDER # CXA-HA*						ORDER # CA-HA*						ORDER # DA-HA*						ORDER # EA-HA*											
ORDER # BXA-SS*						ORDER # CXA-SS*						ORDER # CA-SS*						ORDER # DA-SS*						ORDER # EA-SS*											

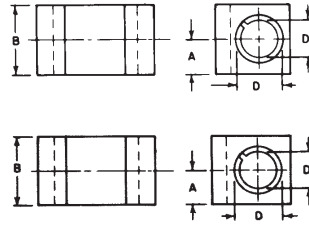
QUICK CHANGE BORING BAR TOOL HOLDERS

#4, #41



HEAVY DUTY BORING BAR HOLDER

Equipped with a split bushing to accommodate a boring bar of smaller diameter. It grips bar with extreme rigidity, cuts smoothly without chatter.



PINS
(New Style) For Holders #4* - #41* (Set of 2)

JAM SCREWS
For Holders #4* - #41* (Set of 2)

AXA SERIES

ORDER # AXA-4

A	B	D	D ₁
3/4	1 1/2	3/4	5/8

ORDER # AXA-41

A	B	D	D ₁
7/8	1 3/4	1"	3/4

ORDER # AXA-PINS*

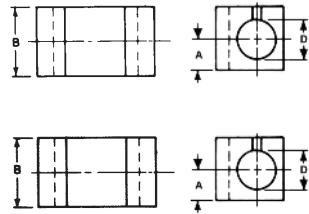
ORDER # AXA-JS*

#4D, #41D



BORING BAR HOLDER

Precision ground bore and split clamping design to accommodate excellent clamping pressure and the ability to adjust positive to negative cutting angle on boring bar. Bushings sold separately, see below.



ORDER # AXA-4D

A	B	D	
3/4	1 1/2	3/4	

ORDER # AXA-41D

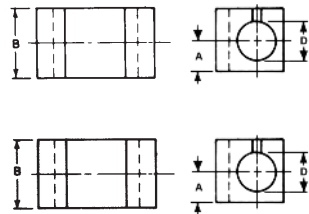
A	B	D	
7/8	1 3/4	1"	

#100, #104 & #141



BORING BAR HOLDER

Heavy duty boring bar holder with precision ground bore and set screw clamping to provide maximum rigidity and alignment of boring bars. Capacities listed in chart. Bushings sold separately, see below.



ORDER # AXA-100

A	B	D	
3/4	1 1/2	5/8	

ORDER # AXA-104

A	B	D	
3/4	1 1/2	3/4	

ORDER # AXA-141

A	B	D	
7/8	1 3/4	1"	

STOP RINGS



ORDER # SR-1 (3/4 I.D.)*

HEIGHT ADJUSTMENT ASSEMBLY



ORDER # AXA-HA*

BUSHINGS/STANDARD

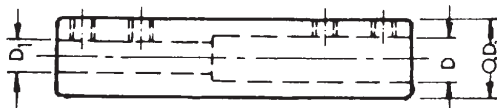
ORDER # AXA-STD*

BUSHINGS/SPECIAL (Non-returnable/cancelable item)

ORDER # AXA-SPL*

REDUCER BUSHINGS FOR BORING BAR TOOL HOLDERS

Designed to accommodate cutting tools of smaller shank diameters, such as drills, endmills, and small boring bars.



ORDERING INFORMATION	SIZES			
	ORDER #	O.D.	D	D ₁
RB-31*	3/4	1/2	1/4	
RB-32*	3/4	3/8	3/16	
RB-41*	1"	5/8	5/16	
RB-42*	1"	1/2	1/4	
RB-51*	1 1/4	3/4	3/8	
RB-52*	1 1/4	5/8	5/16	



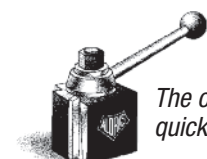
BXA SERIES				CXA SERIES				CA SERIES				DA SERIES				EA SERIES			
ORDER # BXA-4				ORDER # CXA-4				ORDER # CA-4				ORDER # DA-4				ORDER # EA-4			
A	B	D	D ₁	A	B	D	D ₁	A	B	D	D ₁	A	B	D	D ₁	A	B	D	D ₁
1"	2"	1"	¾"	1"	2"	1"	¾"	1⅜"	2¾"	1¼"	1"	1⅝"	3¼"	1½"	1¼"	2¼"	4½"	2½"	2"
ORDER # BXA-41				ORDER # CXA-41				ORDER # CA-41				ORDER # DA-41							
A	B	D	D ₁	A	B	D	D ₁	A	B	D	D ₁	A	B	D	D ₁				
1"	2"	1¼"	1"	1⅝"	2¼"	1¼"	1"	1⅜"	2¾"	1½"	1¼"	1¾"	3½"	2"	1½"				
ORDER # BXA-PINS*				ORDER # CXA-PINS*				ORDER # CA-PINS*				ORDER # DA-PINS*				ORDER # EA-PINS*			
ORDER # BXA-JS*				ORDER # CXA-JS*				ORDER # CA-JS*				ORDER # DA-JS*				ORDER # EA-JS*			
ORDER # BXA-4D				ORDER # CXA-4D				ORDER # CA-4D				ORDER # DA-4D				ORDER # EA-4D			
A	B	D		A	B	D		A	B	D		A	B	D		A	B	D	
1"	2"	1"		1"	2"	1"		1⅜"	2¾"	1¼"		1⅝"	3¼"	1½"		2¼"	4½"	2½"	
ORDER # BXA-41D				ORDER # CXA-41D				ORDER # CA-41D				ORDER # DA-41D							
A	B	D		A	B	D		A	B	D		A	B	D					
1"	2"	1¼"		1⅝"	2¼"	1¼"		1⅜"	2¾"	1½"		1¾"	3½"	2"					
ORDER # BXA-100				ORDER # CXA-100				ORDER # CA-100				ORDER # DA-100				ORDER # EA-100			
A	B	D		A	B	D		A	B	D		A	B	D		A	B	D	
1"	2"	¾"		1"	2"	¾"		1¼"	2½"	1"		1⅜"	2¾"	1¼"		1¾"	3½"	2"	
ORDER # BXA-104				ORDER # CXA-104				ORDER # CA-104				ORDER # DA-104				ORDER # EA-104			
A	B	D		A	B	D		A	B	D		A	B	D		A	B	D	
1"	2"	1"		1"	2"	1"		1¼"	2½"	1¼"		1½"	3"	1½"		2"	4"	2½"	
ORDER # BXA-141				ORDER # CXA-141				ORDER # CA-141				ORDER # DA-141				ORDER # EA-141			
A	B	D		A	B	D		A	B	D		A	B	D		A	B	D	
1"	2"	1¼"		1⅝"	2¼"	1¼"		1⅜"	2¾"	1½"		1¾"	3½"	2"		2¼"	4½"	3"	
ORDER # SR-1 (¾ I.D.)*				ORDER # SR-2 (1" I.D.)*				ORDER # SR-2 (1" I.D.)*											
ORDER # BXA-HA*				ORDER # CXA-HA*				ORDER # CA-HA*				ORDER # DA-HA*				ORDER # EA-HA*			
ORDER # BXA-STD*				ORDER # CXA-STD*				ORDER # CA-STD*				ORDER # DA-STD*				ORDER # EA-STD*			
ORDER # BXA-SPL*				ORDER # CXA-SPL*				ORDER # CA-SPL*				ORDER # DA-SPL*				ORDER # EA-SPL*			

Larger holders available for CA, DA Series on page 28.



ALORIS TOOL TECHNOLOGY CO., INC.

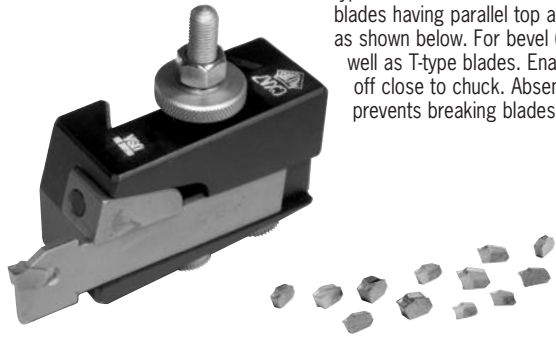
397-407 GETTY AVENUE • P.O. BOX 1529 • CLIFTON, NJ 07015-1529
 TEL: 973.772.1201 • FAX: 973.772.8606 • TOLL FREE: 877.772.1733
 E-MAIL: aloris@aloris.com • WEBSITE: <http://www.aloris.com>



The originator of
quick change tooling

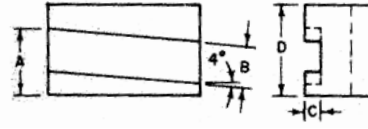
QUICK CHANGE PARTING & INSERT BLADE HOLDERS CUT-OFF & GROOVING HOLDERS

#7

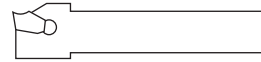


UNIVERSAL PARTING BLADE HOLDER

#7 and #7R Holders are only for use with the Aloris Wedge Grip Carbide Insert blades, T-type blades or with bevel (wedge-shape) blades having parallel top and bottom edges, as shown below. For bevel (see drawing) as well as T-type blades. Enables you to cut-off close to chuck. Absence of vibration prevents breaking blades.



ALORIS WEDGE GRIP CARBIDE INSERT BLADES



PARTING BLADES



WEDGE AND LOCK SCREW ASSEMBLY FOR HOLDERS #7



HEIGHT ADJUSTMENT ASSEMBLY



AXA SERIES

ORDER # AXA-7

A	B	C	D	BLADE HEIGHT
1 ¹⁵ / ₁₆	1/2	3/16	1 1/2	1/2

ORDER # SGIH 19-3C-A7

ORDER # P-2*

WIDTH "A": 3/32	HEIGHT "B": 1/2
-----------------	-----------------

ORDER # WSA-1*

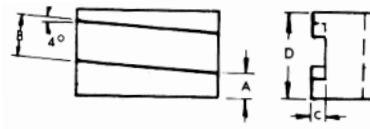
ORDER # AXA-HA*

#7R

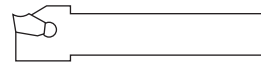


UNIVERSAL PARTING BLADE TOOL HOLDER - REVERSIBLE

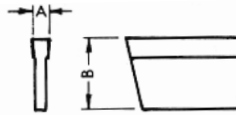
Has the same features as #7 with the advantage of rear cut-off use.



ALORIS WEDGE GRIP CARBIDE INSERT BLADES



PARTING BLADES



WEDGE AND LOCK SCREW ASSEMBLY FOR HOLDERS #7



HEIGHT ADJUSTMENT ASSEMBLY



ORDER # AXA-7R

A	B	C	D	BLADE HEIGHT
1 ¹⁵ / ₁₆	1/2	3/16	1 1/2	1/2

ORDER # SGIH 19-3C-A7

ORDER # P-2*

WIDTH "A": 3/32	HEIGHT "B": 1/2
-----------------	-----------------

ORDER # WSA-1*

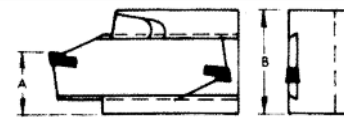
ORDER # AXA-HA*

#71



CUT-OFF AND GROOVING HOLDER

Designed for extremely high rigidity under heavy duty conditions, and cool chatter-free operation at higher speeds. Two different blades can be used with this holder: wedge grip throwaway insert blade, or reversible blade with brazed-in carbide tips. The chip-breaker is an integral part of the blade and cannot be lifted by broken chips. Simplicity is but one of the major advantages of the Series 71. Adjustment of the blade position is simple, the locking is accomplished by one screw instead of the usual number of adjusting and clamping screws. The versatility of this tool is further increased by the availability of a wide range of cutting edge widths. Holder supplied less blade. When ordering brazed carbide blades, specify grade A2 or A6. For carbide cut-off inserts see page 54.



REVERSIBLE BLADES WITH BRAZED-IN CARBIDE TIPS



ORDER NUMBER	71-125-1*	71-187-1*	71-250-1*
WIDTH x HEIGHT	.120 x 1.50	.187 x 1.50	.250 x 1.50

WEDGE GRIP THROWAWAY INSERT BLADES



ORDER NUMBER	71-125-1BSL*	71-187-1BSL*	71-250-1BSL*
WIDTH x HEIGHT	.120 x 1.50	.187 x 1.50	.250 x 1.50

EXTRACTOR (For self-locking carbide insert removal)

ORDER # ESG-1*

WEDGE AND LOCK SCREW ASSEMBLY FOR HOLDERS #7



ORDER # WSA-6*

HEIGHT ADJUSTMENT ASSEMBLY



ORDER # AXA-HA*



**TECHNICAL DATA:
DIMENSIONS – CAPACITIES – MODELS**

BXA SERIES					CXA SERIES					CA SERIES					DA SERIES					EA SERIES									
ORDER # BXA-7					ORDER # CXA-7					ORDER # CA-7					ORDER # DA-7					ORDER # EA-7									
A	B	C	D	BLADE HEIGHT	A	B	C	D	BLADE HEIGHT	A	B	C	D	BLADE HEIGHT	A	B	C	D	BLADE HEIGHT	A	B	C	D	BLADE HEIGHT					
1"	1 ¹ / ₁₆	3 ³ / ₁₆	1 ³ / ₄	1 ¹ / ₁₆	1 ³ / ₁₆	3 ³ / ₁₆	3 ³ / ₁₆	2"	3 ³ / ₁₆	1 ¹ / ₁₆	7 ⁷ / ₈	1 ¹ / ₄	2 ¹ / ₂	7 ⁷ / ₈	1 ³ / ₄	1 ¹ / ₈	1 ¹ / ₄	2 ³ / ₄	1 ¹ / ₈	1 ¹ / ₈	1 ¹ / ₈	1 ¹ / ₄	3"	1 ¹ / ₈					
ORDER # SGIH 26-4C-B7					ORDER # SGIH 26-4C-CX7					ORDER # SGIH 32-4.8C-C7					ORDER # SGIH 32-4.8C-D7					ORDER # SGIH 32-4.8C-E7									
ORDER # P-3*		ORDER # P-4C*			ORDER # P-3W*					ORDER # P-5*					ORDER # P-8*					ORDER # P-8*									
WIDTH "A": 3 ³ / ₈ HEIGHT "B": 1 ¹ / ₁₆		WIDTH "A": 5 ⁵ / ₃₂ HEIGHT "B": 1 ¹ / ₁₆			WIDTH "A": 1 ¹ / ₈		HEIGHT "B": 3 ³ / ₄			WIDTH "A": 3 ³ / ₁₆		HEIGHT "B": 7 ⁷ / ₈			WIDTH "A": 3 ³ / ₁₆		HEIGHT "B": 1 ¹ / ₈			WIDTH "A": 3 ³ / ₁₆		HEIGHT "B": 1 ¹ / ₈							
ORDER # WSA-1*					ORDER # WSA-2*					ORDER # WSA-3*					ORDER # WSA-4*					ORDER # WSA-5*									
ORDER # BXA-HA*					ORDER # CXA-HA*					ORDER # CA-HA*					ORDER # DA-HA*					ORDER # EA-HA*									
ORDER # BXA-7R					ORDER # CXA-7R					ORDER # CA-7R					ORDER # DA-7R					ORDER # EA-7R									
A	B	C	D	BLADE HEIGHT	A	B	C	D	BLADE HEIGHT	A	B	C	D	BLADE HEIGHT	A	B	C	D	BLADE HEIGHT	A	B	C	D	BLADE HEIGHT					
3 ³ / ₄	1 ¹ / ₁₆	3 ³ / ₁₆	1 ³ / ₄	1 ¹ / ₁₆	1"	1 ¹ / ₈	1 ¹ / ₁₆	2"	3 ³ / ₁₆	1 ¹ / ₁₆	7 ⁷ / ₈	1 ¹ / ₄	2 ¹ / ₂	7 ⁷ / ₈	1"	1 ¹ / ₈	1 ¹ / ₄	2 ³ / ₄	1 ¹ / ₈	1"	1 ¹ / ₈	1 ¹ / ₄	3"	1 ¹ / ₈					
ORDER # SGIH 26-4C-B7					ORDER # SGIH 26-4C-CX7					ORDER # SGIH 32-4.8C-C7					ORDER # SGIH 32-4.8C-D7					ORDER # SGIH 32-4.8C-E7									
ORDER # P-3*		ORDER # P-4C*			ORDER # P-3W*					ORDER # P-5*					ORDER # P-8*					ORDER # P-8*									
WIDTH "A": 3 ³ / ₈ HEIGHT "B": 1 ¹ / ₁₆		WIDTH "A": 5 ⁵ / ₃₂ HEIGHT "B": 1 ¹ / ₁₆			WIDTH "A": 1 ¹ / ₈		HEIGHT "B": 3 ³ / ₄			WIDTH "A": 3 ³ / ₁₆		HEIGHT "B": 7 ⁷ / ₈			WIDTH "A": 3 ³ / ₁₆		HEIGHT "B": 1 ¹ / ₈			WIDTH "A": 3 ³ / ₁₆		HEIGHT "B": 1 ¹ / ₈							
ORDER # WSA-1*					ORDER # WSA-2*					ORDER # WSA-3*					ORDER # WSA-4*					ORDER # WSA-5*									
ORDER # BXA-HA*					ORDER # CXA-HA*					ORDER # CA-HA*					ORDER # DA-HA*					ORDER # EA-HA*									
ORDER # BXA-71					ORDER # CXA-71					CA-71 (2")		CA71-1 (1 ¹ / ₂)			ORDER # DA-71					ORDER # EA-71									
A	B	USED WITH BLADE WIDTHS			A	B	USED WITH BLADE WIDTHS			A	B	USED WITH BLADE WIDTH			A	B	USED WITH BLADE WIDTHS			A	B	USED WITH BLADE WIDTHS							
1 ⁵ / ₁₆	2"	7 ⁷ / ₈ , 3 ³ / ₁₆ or 1 ¹ / ₄			1 ⁵ / ₁₆	2 ³ / ₈	1 ¹ / ₈ , 3 ³ / ₁₆ or 1 ¹ / ₄			1 ¹ / ₈	3 ³ / ₄	3 ³ / ₁₆ , 1 ¹ / ₄			1 ¹ / ₁₆	2 ¹ / ₂	71-125-1BSL 1/2 \$46.00 71-187-1BSL 3/4 \$51.75 71-250-1BSL 1/2 \$55.20			2"	3 ³ / ₄	3 ³ / ₁₆ or 1 ¹ / ₄			2 ¹ / ₁₆	3 ³ / ₈	3 ³ / ₁₆ or 1 ¹ / ₄		
71-125-1*	71-187-1*	71-250-1*			71-125-1*	71-187-1*	71-250-1*			71-187-2*	71-250-2*			71-187-2*	71-250-2*			71-187-2*	71-250-2*			71-187-2*	71-250-2*						
.120 x 1.50	.187 x 1.50	.250 x 1.50			.120 x 1.50	.187 x 1.50	.250 x 1.50			.187 x 2.00	.250 x 2.00			.187 x 2.00	.250 x 2.00			.187 x 2.00	.250 x 2.00			.187 x 2.00	.250 x 2.00						
71-125-1BSL*	71-187-1BSL*	71-250-1BSL*			71-125-1BSL*	71-187-1BSL*	71-250-1BSL*			71-187-2BSL*	71-250-2BSL*			71-187-2BSL*	71-250-2BSL*			71-187-2BSL*	71-250-2BSL*			71-187-2BSL*	71-250-2BSL*						
.120 x 1.50	.187 x 1.50	.250 x 1.50			.120 x 1.50	.187 x 1.50	.250 x 1.50			.187 x 2.00	.250 x 2.00			.187 x 2.00	.250 x 2.00			.187 x 2.00	.250 x 2.00			.187 x 2.00	.250 x 2.00						
ORDER # ESG-1*					ORDER # ESG-1*					ORDER # ESG-1*					ORDER # ESG-1*					ORDER # ESG-1*									
ORDER # WSA-7*					ORDER # WSA-8*					ORDER # WSA-9*		ORDER # WSA-8*			ORDER # WSA-10*					ORDER # WSA-11*									
ORDER # BXA-HA*					ORDER # CXA-HA*					ORDER # CA-HA*					ORDER # DA-HA*					ORDER # EA-HA*									