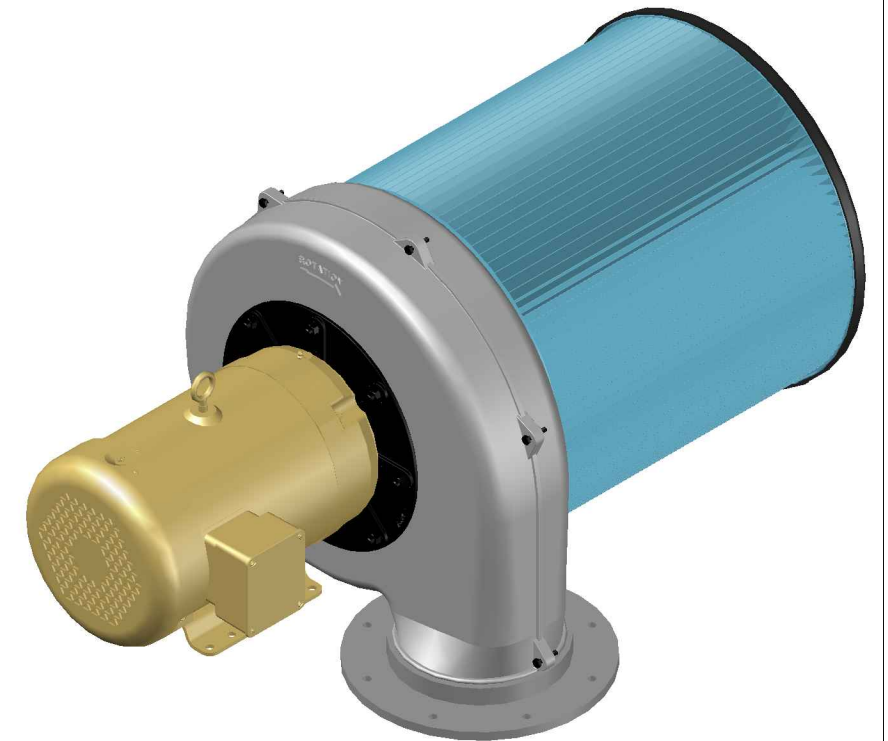


P/N: 13201 (NO FILTER)  
 P/N: 13200 (METAL MESH FILTER)  
 P/N: 13202 (PLEATED PAPER FILTER)

POWER: 208-230/460V/3PH/60  
 AMPS: 24.0 @ 208v  
 23.2 @ 230V  
 11.6 @ 460V  
 CFM @ 0"(NO FILTER): 3000

NOTE:  
 MOTOR AND FILTER CAN BE REVERSED



THIS PRINT IS THE PROPERTY OF WAYNE PRODUCTS AND IS TO BE RETURNED IMMEDIATELY UPON DEMAND. THE INFORMATION DIMENSIONS, ETC. ARE CONFIDENTIAL AND ARE NOT TO BE DIVULGED OR SUBMITTED TO OTHERS. VERIFY DIMENSIONS AND SYSTEM LAYOUT ON INSTALLATION DRAWINGS BEFORE STARTING INSTALLATION. DUE TO CONSTRUCTION VARIATIONS, ACTUAL BUILDING DIMENSIONS MAY DIFFER FROM THOSE SHOWN ON DRAWINGS.

|                       |         |  |                      |
|-----------------------|---------|--|----------------------|
| <b>WAYNE PRODUCTS</b> |         | 888 Sussex Blvd. Broomall, PA 19008<br>Phone: 610-251-0933 Fax: 610-251-0948 |                      |
| date: 8/11/22         |         | Title: Electra-Kool Model 3000 Filtered Ventilator System                    |                      |
| drawn by: GRM         | size: B | ckd by: NTS  | dwg name: Model 3000 |
| scale: NTS            |         |  | REV: 0               |